



Adashi Systems LLC
101 N. Haven Street, Suite 301
Baltimore MD 21224

877-563-9980 (O)
www.adashisystems.com

Dear Adashi Systems Customer:

We are pleased to announce the release of Version 3.3, Adashi's latest software update. Version 3.3 incorporates many new features and bug fixes. A list of important enhancements and fixes are on the back page of this letter.

Your active maintenance contract entitles you to this version and future maintenance releases/versions at no additional cost.

Please find the enclosed USB drive which includes the Navteq maps, software update and installation instructions. The same installer can be utilized to update Dispatch, First Response, and Command Post software.

If you need assistance please contact the technical support team by going to www.adashisystems.com and then Support or by phone at 877-563-9980, Ext 3

You can also find the installation instructions and other information about this update on our website at www.adashisystems.com.

Thank you for choosing Adashi and your continued support of the Adashi products.

Best wishes,

Alex M Menkes
CEO



Version 3.3 Highlights

Premium Navteq GIS updates – These updates have become quite large and are being distributed on a USB drive annually.

ADASHI Program updates –

1. Routing – Routing has been significantly improved. Three additional features:
 - i. Alternate route calculation and selection
 - ii. Configurable routing modes: If a vehicle is too heavy to cross specific bridges or roadways the program will automatically route appropriately. The routing algorithm can be set to route using different rules when sirens are on (associated with specific status) versus returning to quarters. These are only two of the many variations that can be utilized.
 - iii. Routing map layout is now customizable
2. Click for info – Clicking or hovering anywhere on the map will produce a window of useful geographic information
3. Map speed improvements
4. GPS acquisition improvements including automated configuration
5. Utilizes ESRI map engine 10.2.X
6. Map panning improvements (panning operates similar to google maps)
7. Touch screen usability – significant improves the program’s usability within a multi-touch environment
8. Enhanced Aerial and Web Map Views – click on any map location and display a variety of user selected web-derived {Bing, Google Street View} images
9. Day/Night Map Views
10. All new multi-search windows - simultaneously search for multiple addresses and points of interest
11. Dispatch form user interface improvements
12. AVL playback (Command Post only) - review variable speed playback vehicle positions at any time in the past
13. Resource Browser (Command Post only) – locate and get complete information about any vehicle
14. Fleet Management (Command Post only) – modify configuration centrally for individual units or entire fleet and provide remote diagnostic tools and information through an easy to use interface
15. Command and Control (Command Post only) – Organizational chart population and resource assignment can now be “controlled” and “released” by commanders. In addition command and control will now always operate even without an internet connection.
16. Enhanced CAD Incidents Browser (Command Post only – Incidents highlighted by the control can be filtered by special “flags” custom selected by customer
17. ADASHI Server Full Clustering and Failover (Enterprise Level Service Agreements only)
18. Various bug fixes, UI improvements and minor feature additions



Adashi Client Upgrade Instructions

Step 1: Previous version and prerequisite check

If the Installer does not automatically run when you insert the Adashi USB, navigate to your USB drive and double click the file called "Setup.exe". As an early part of the install process, old versions of Adashi will be detected and removed before installation can commence. If you had an older Adashi v3 product, you will be prompted to see if you customized your Adashi with data such as roles, guidance, views, etc., and the installer will back up your customizations and restore them once your new Adashi is installed. Also, in order to run, Adashi requires the following software to already be installed on your system:

- Microsoft .NET Framework 3.5 and 4.0
- ESRI ArcGIS Engine Runtime 10.2.2
- Microsoft SQL Compact Edition 3.5¹

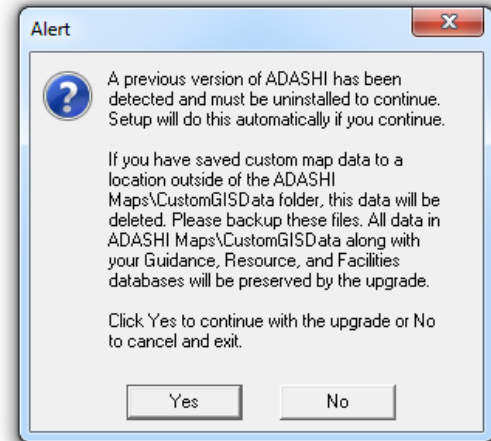
The Microsoft components should already exist as prerequisites to your existing Adashi v3 product, but ArcGIS will need to be upgraded. Setup will automatically detect the previous version of ArcGIS and will prompt you through uninstalling it. It will then install the new version. If there is a problem with the prerequisites, you can cancel out and install them manually. Their installers can be found in the "Prerequisites" folder on the Adashi USB.

¹In addition to Microsoft's SQL Compact Edition Adashi is compatible with Microsoft SQL Express, Microsoft SQL Standard Server, and Microsoft SQL Enterprise Server, for both Adashi Server and the Client.



Step 2: Previous Adashi Uninstallation

An alert will popup telling you a previous version of ADASHI has been detected. It warns you that if you have custom map data in a non-standard location it may be lost. Click Yes to proceed. Setup will back up your data and uninstall the old Adashi. After that, the normal program installation will continue.



Step 3: Main Adashi Program Installation

1. Click Next to begin the Adashi Installation Wizard.
2. On the Emergency Response Provider Agreement window, click Yes to confirm you are an Emergency Responder and click Next.
3. If you agree to the terms, click "I accept..." on the License Agreement window and click Next to continue.
4. On the Prerequisite Check screen verify the listed components say "OK" and click "Next"
5. Select the folder you want Adashi to be installed into or click Next to accept the default.
6. Choose the Installation Type you want to use. "Standard" installs the complete program and all map files, "Custom" allows you to choose whether or not to install the default map set. If you do not install default maps, you must tell Adashi where your MXD is in the next screen.
7. If you selected "Standard", you can now click Next to begin the installation. If you selected "Standard" you may now choose whether or not to install default maps and other components. If this is to be a Command Post install, you should select ADASHI Server to be installed for Command and Control org chart purposes. Click Next to continue when done.
8. (optional) If you have your own map files, you can have Adashi use them as its default map. Click Browse to set the locations for your MXD, LOC, and RS files, if you have them. MXD is the minimum you have to set for viewing a 3rd party map. For more information, please read the Advanced Usage section on "Adding Your GIS Maps to Adashi." If you don't change these paths, the system will use the default map locations. This can be set later from inside Adashi if you don't want to do it now. Click Next and Next again to begin installation.

